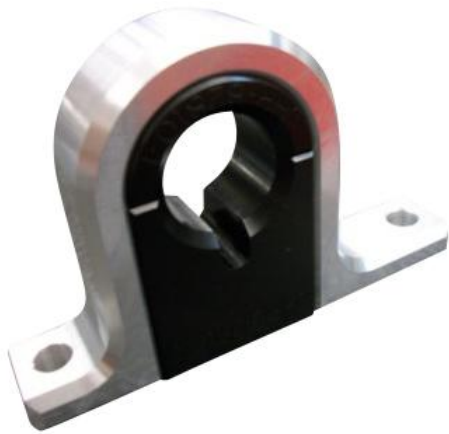


Joe Heck Racing Inc.

Ph 561-361-1314

joeheckracing@rocketmail.com



Thank you for purchasing the JHR Billet Shifter Mount Bracket

First and foremost please be responsible and follow all safety procedures while completing this installation. If you do not feel comfortable with the work to be performed have a skilled technician preferably at your local speed shop complete the installation.

1. Raise car on jack stands or lift if available.
2. Locate and remove the stock shifter mounting bracket using a 10mm socket. It is located at the rear of the shifter housing which is approximately above the front end of the driveshaft.
3. The JHR shifter mount has delrin inserts that slide up and down in the machined groove on the open end of the bracket, just enough to fit over the aluminum base on the rear of the shifter housing.
4. Once you have slid the new bushing and mount over the end of the shifter housing, you can now slide the delrin back into the billet mount. ****NOTE:** There is a cutout in the bushing that you will be sliding back into position. This cutout will locate on a raised web on the shifter housing.
5. Raise the assembly back into position and slide the billet mount onto the studs. Re-install the 2 nuts that you removed earlier.
6. The installation is now complete.
7. If you have any questions or comments please feel free to contact us via email at JoeheckRacing@Rocketmail.com or call 561-361-1314. We are available from 9 to 6 Monday through Friday and from 10 to 5 on Saturday eastern standard time.

850 NW 1st Ave. Boca Raton, Fl 33432

Joe Heck Racing Inc.

Ph 561-361-1314

joeheckracing@rocketmail.com



850 NW 1st Ave. Boca Raton, Fl 33432