



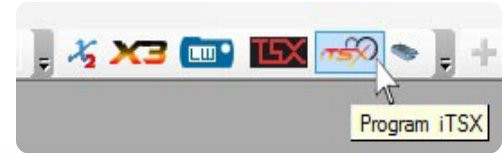
iTSX – Transferring a custom tune via USB using Advantage III



Transferring a .mtf to your iTSX Dongle

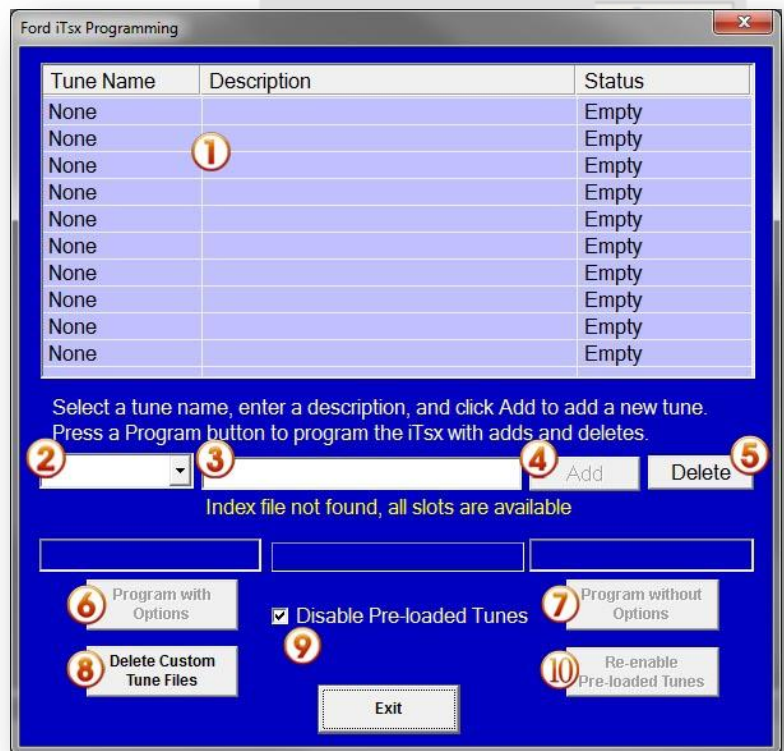
When transferring a tune via Advantage III for iTSX the programming window is different than any other SCT product. This new window with its features will be described and explained below.

We can start with the device icon tool bar; the iTSX icon will appear if your Advantage III software is up to date.



➤ **Ford iTSX Programming window**

- ① You will first notice that with the iTSX device you are able to load up to ten custom tunes if desired.
- ② Click on the drop down box and select the tab number that you want to program to the iTSX.
- ③ Enter the tune name as you would like it to appear on the device, click **Add**
- ④ By clicking **Add**, you are sending the tune file to a queue to be loaded onto the device, the tune has not yet been transferred to the iTSX.
- ⑤ **"Delete"** – you may choose to delete any tune file you'd like by selecting the tune (when selected it will be highlighted), then pressing Delete.
- ⑥ To write the tune, press **"Program with Options"**
- ⑦ **"Program without Options"**, these will become available only after a tune has been added to the list.



- ⑧ **"Delete Custom Tune Files"** – You can delete all existing custom tune files off of the iTSX by selecting this.
- ⑨ **"Disable Pre-Loaded Tunes"** – By default this option is checked, you may uncheck the box to allow the customer to still have his Pre-Loaded tunes after using the custom tune file.
- ⑩ **"Re-enable Pre-loaded Tunes"** – selecting this button will delete all existing custom tunes off of the iTSX dongle and re-enable the Pre-loaded tunes. For this option to become available, the vehicle must be returned back to stock and you must uncheck the "Disable Pre-loaded Tunes" check box.

➤ **Features to know about this window:**

Tune Slots – Advantage software will automatically load your tune to the next available slot, starting from top to bottom. You cannot choose a specific slot to load the tune file. Ex: If you have six tunes on your iTSX, you decide to delete the tunes in slots two and four, the software will automatically write you next tune to slot two.

Status column – There are three different status's that can be displayed.

- **Empty** - There are no custom tunes in the slot.
- **New** - The custom tune has been placed in the list and is ready to be transferred to the iTSX dongle
- **Programmed** – The custom tune is saved in the iTSX dongle.